

James Jenkins

Registered Architect

✉ 3265 Virginia Street #13, Miami jamesjenkins03@hotmail.com ☎ 513-491-4332 🌐 www.linkedin.com/in/jamesjenkins03/ 🌐 https://jamesjenkins03.weebly.com

CAREER OBJECTIVES

Seeking a position in a dynamic Architecture or A/E firm where my skills in communication, software, creativity, leadership and passion for practice can assist in developing, improving, and leading projects.

Having been involved in over 32 million square feet of construction, I look forward to every new opportunity with a multi disciplinary team, to create innovative solutions for clients.

ABOUT

20+ year career working while living in Europe, Asia, UAE, and the USA on many project types including office towers, retail streets, shopping malls, residential towers, university buildings, and master plans- many of which were competition/award winning.

For each project, I seek out opportunities to improve or expand upon social, environmental, and spatial allocations for more efficient, effective design solutions for the client.

EDUCATION

2002-2003 University of Cincinnati

Masters of Architecture, Honors
Earning "Director's Choice", "Best in Show", and a Cincinnati AIA award

1997-2001 University of Cincinnati

Bachelors of Architecture, Honors
AIA award, DAAP Softball Champions

1993- 1995 South Dakota School of Mines

2 year study in Civil Engineering
R.O.T.C. office of Chaplain, DJ for KTEQ 91.3 fm

6 MONTH COLLEGE INTERNSHIPS

KPF

New York City, 2001

- **Shanghai World Financial Tower**, Shanghai, China

Cesar Pelli & Associates

New Haven, 2000

- **Lehman Brothers Headquarters**, London, UK, Concept & SD
- **Heron Quays Towers 3 & 4**, London, UK, Lobby Interiors

Murphy/Jahn

Chicago, 1999

- **Bangkok International Airport**, Bangkok, Thailand, Interiors
- **Deutsche Post Tower**, Bonn, Germany, Exterior Wall Types

KEY PROJECT EXPERIENCE

Independent Practice

Miami
2020-2021

- **Single Family Homes**, 4 interior renovations, 1 addition

Arquitectonica

Miami
Associate
Project Leader
2015-2020

- **Lakewood Apartments**, Low Income Housing, Florida
24 unit housing prototype design utilizing composite plastic components for walls, beams and floors.
Independently completed SD thru CD
- **Port Aventura**, Hotel and Apartment tower, Florida
170 key hotel w/ three meal restaurant & 204 apartments
Independently completed SD thru 50% CD
- **Bambu City Center**, Shopping Mall, El Salvador
Hillside shopping mall w/ five floor office building
Independently completed Concept thru DD
- **Foro 2-25 Torre Curridabat**, San Jose, Costa Rica
118 Unit condo twin towers w/ retail,
Independently completed SD & DD

AEDAS

Shanghai
Associate
Job Captain
2014- 2015

- **Alibaba Center**, 4 low rise office buildings, Shanghai, China
Competition win, lead team of three thru DD & Wall Package
- **Zhenro Offices**, 12 low rise office buildings, Shanghai, China
Competition win, lead team of three thru DD & Wall Packages
- **Meixi Lake R&D Center**, two office towers, Changsha, China
Lead team of three from Concept thru SD

ATKINS

Shanghai
Dubai
Associate
Job Captain
2012-2014

- **Mecca Phase 3 Master Plan**, Mecca, Saudi Arabia
Participated in creating Concept Design & SD
- **Dubai Creek & Olympic Park**, master plan, Dubai, UAE
Lead team of three (of three teams) for Competition win
- **IMX Conference Center**, Shanghai, China
Lead team of three for Competition & SD
- **Petro China Headquarters**, office park, Karamay, China
Lead team of three for Competition & SD

AECOM

Shanghai
Shenzhen
Design Director
2010-2012

- **River Walk Retail Village**, Meizhou, China
Lead team of four from Competition thru SD
- **Lang Fang Shopping Street**, Lang Fang, China,
Lead team of two from Concept thru SD
- **Dongping Metro Center**, Foshan, China
Lead team of four from Concept thru DD

RMJM

New York
London
Shanghai
Associate
Senior Designer
2005-2010

- **111 Central Park**, Residential, Manhattan,
Concept thru DD
- **Waterside Place**, Mixed use, Boston,
Lead team of five from Concept thru 50% DD
- **Gazprom Headquarters**, Saint Petersburg, Russia
Lead team of three on podium from SD & DD
- **CMB Corporate Campus**, Chengdu, China,
Competition thru SD

KPF

New York
Designer
2003-2005

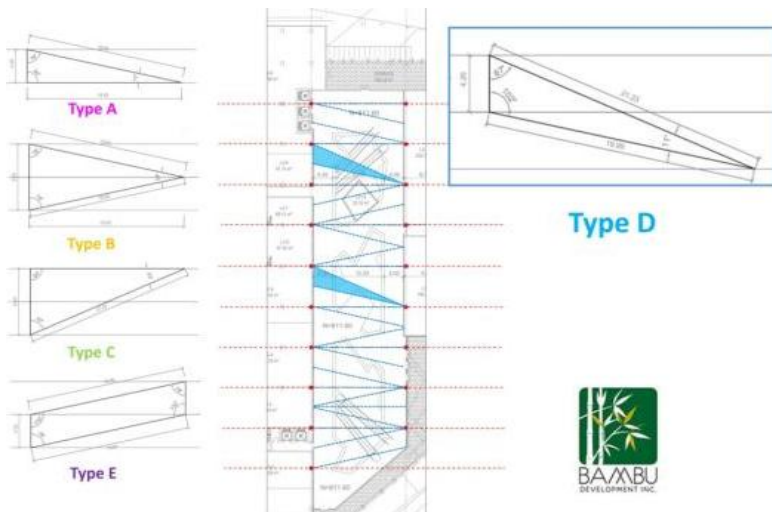
- **FIU Chapman School**, Academic Buildings, Miami, SD & DD
- **Samsung Seocho**, Three Towers, Seoul, Korea Concept thru DD
- **Riverside 66**, Shopping Mall, Tianjin, China, SD & DD

Bambu City Center

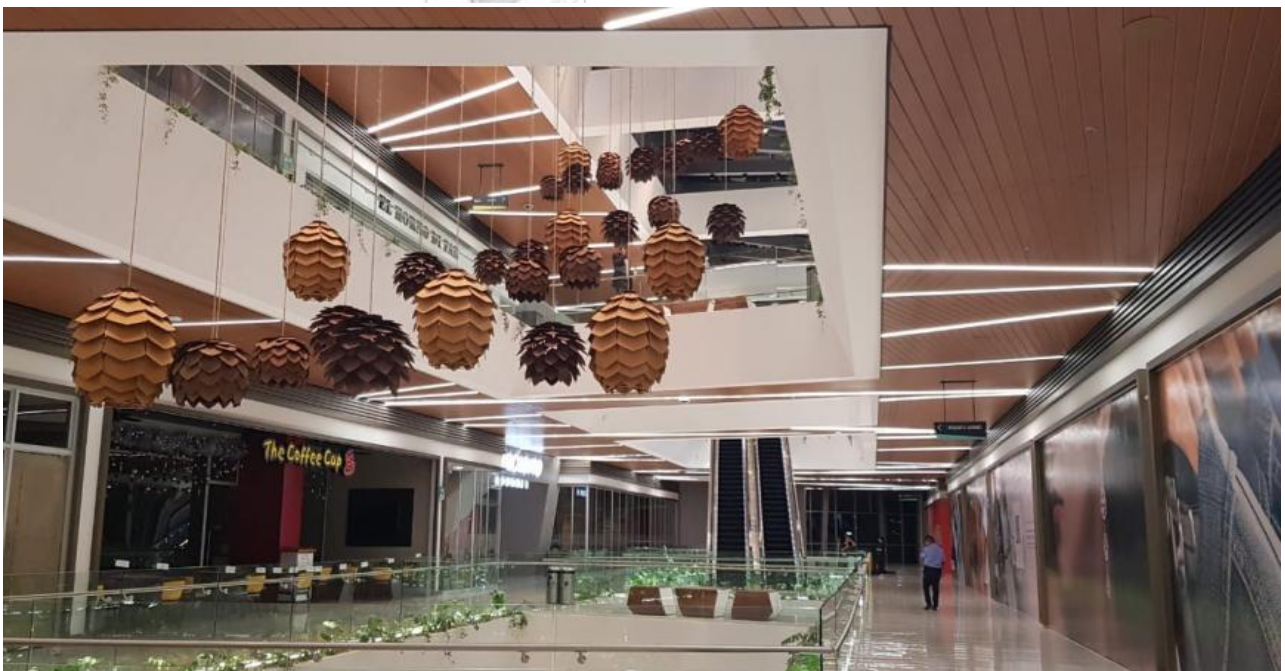
San Salvador, El Salvador

As the first phase project for a new hillside redevelopment within San Salvador, the client wanted Bambu City Center to act as the iconic gateway and also food hub for the future developments around it. Two levels of shopping are sandwiched between a basement grocery store and a partially enclosed food arcade with rooftop/outdoor terrace above. The shopping mall skylight separates the public outdoor roof space from four floors of spec office space adjacent. I worked independently from Concept through Design Development.

Associate,
Project Lead
Arquitectonica, 2015
Completed 2019



The image to the left is an excerpt from a design meeting I had with the client. I took the criss crossing bamboo from the client's own company logo, that we were using for branding purposes on the exterior, and reapplied to the skylight mullions and supporting beams and carried it down through the ceilings of the shopping floors, elevator vestibules, public bathroom ceilings and floors, and the flooring at the mall and office entries. For construction quality assurance, the five unit types were directly associated with the 8.4 meter column grid and could be pre manufactured and delivered to site for installation.



1309 South Flagler Street

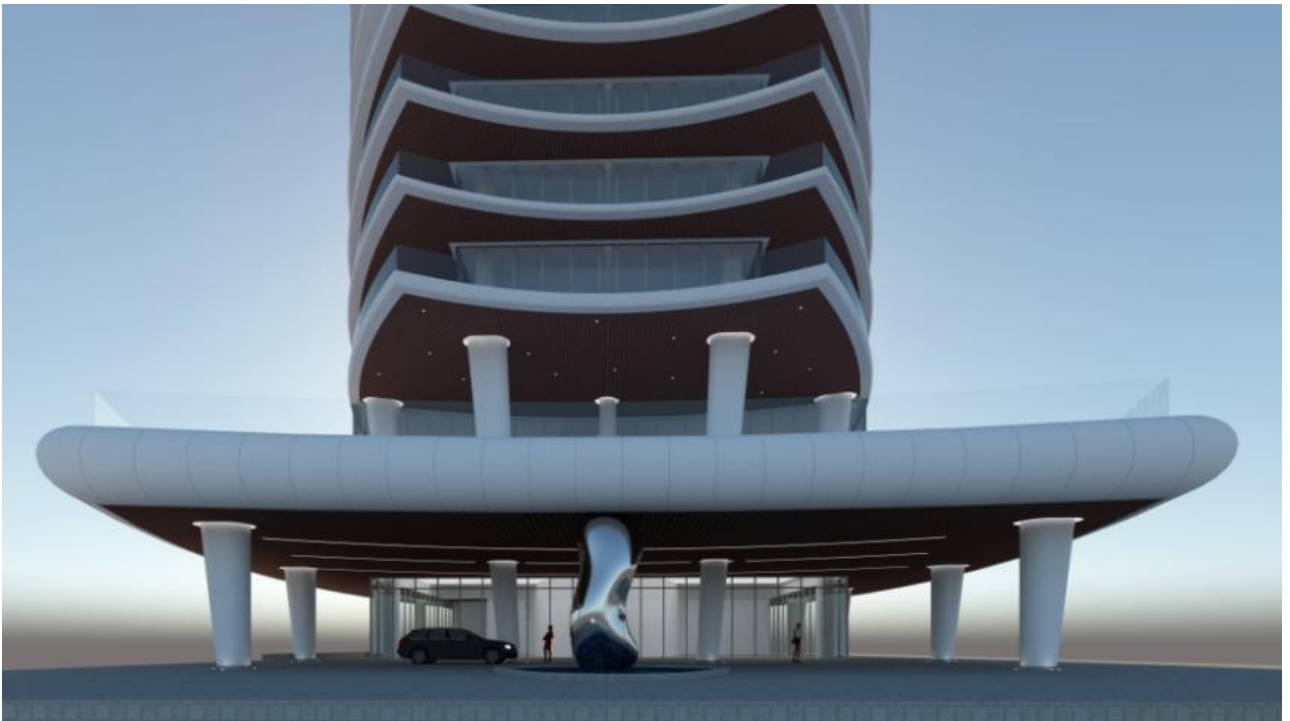
West Palm Beach, Florida

241,000 sf, 24 floor luxury condo tower w/ two underground levels of parking. With only two units per floor (4,200 sf each) facing Lake Worth Lagoon, each unit will also have five basic options for powder room/ kitchen/ den layouts for new owners to pick from prior to purchase.

I worked independently on Schematic and Site Plan Approval.

Associate,
Project Lead
Arquitectonica, 2020
On Hold

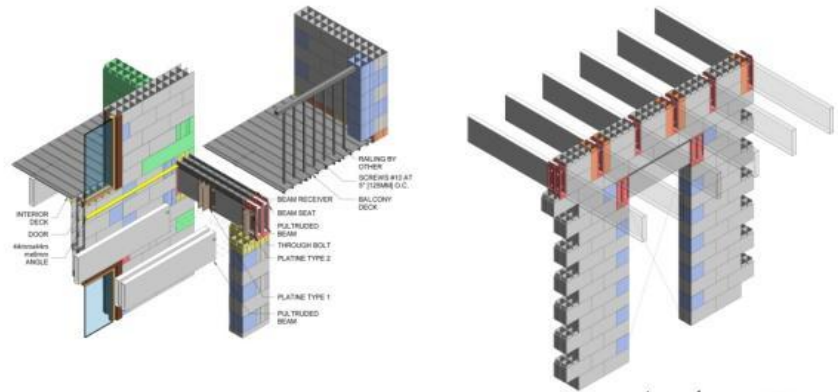
Below is a study rendering I created using my Revit model exported into Sketchup w/ Vray for my discussion with the client were about lighting at the tops and bottoms of the columns, soffit lighting for both public floors and possible use of Prodema. Profiles and materials for slab edges were also included, shown here as painted round metal panel for second floor and bullnose shaped foam with stucco finish for the remaining floors. The central chrome "Blob" column cover was at owner's request.



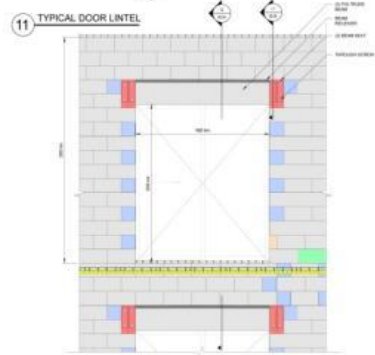
Lakewood Apartments

Palm Beach County, Florida

Low income housing prototype utilizing manufactured plastic blocks, plastic beams, plastic beam pockets and corrugated plastic flooring panels. By incorporating these products, construction time is cut using glue guns for block wall assemblies (essentially large Legos) that gyp board is then screwed directly onto. Initially prepared as four- 18 unit apartments, the buildings themselves are planned to be replicated throughout Florida. I worked independently with client, Construction Manager and engineers from schematic through 100% Construction Documents using Revit 2018. Structural/product testing to be completed in 2020 for a construction start in early 2021.

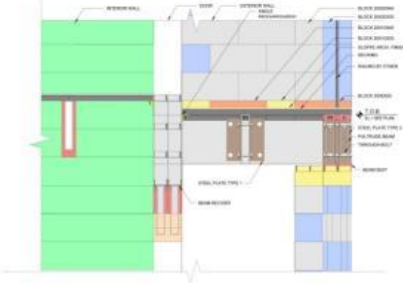


10 BALCONY TYPE 3 DETAIL



11 TYPICAL DOOR LINTEL

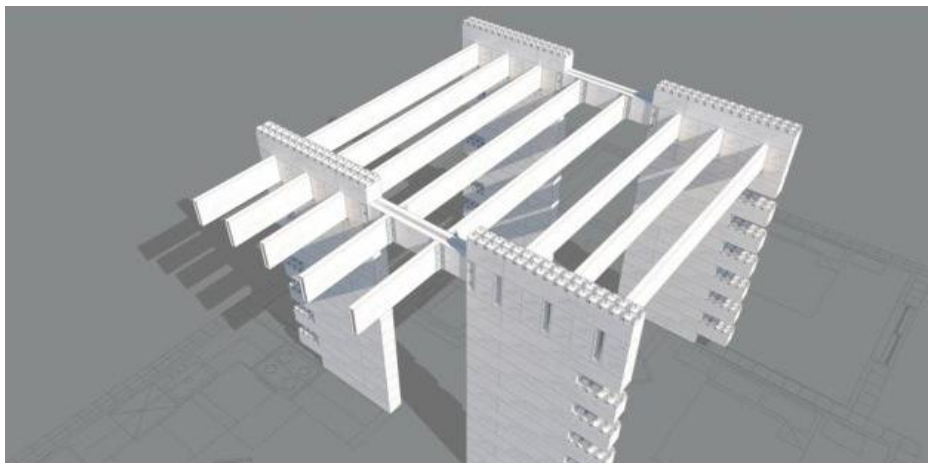
14 SECTION



15 TYPICAL LINTEL BALCONY

- W=20 cm H=20cm L=40cm
- W=20 cm H=20cm L=20cm
- W= 10 cm H= 10 cm L= 20 cm
- W= 20 cm H= 10 cm L= 40 cm
- W= 20 cm H= 10cm L= 20 cm
- W= 10 cm H= 10 cm L= 20 cm
- W= 20 cm H= 20 cm L= 120 cm
- CAP
- BEAM RECEIVER
- ANGLE BEAM
- BEAM SEAT
- BEAM B= 6 cm H= 35 cm
- STEEL PLATE 4" x 4" x 3/8"
- STEEL PLATE
- W= 10cm H= 40cm L= 20cm

6 ELEMENTS LEGEND



Port Aventura

Aventura, Florida

170 key hotel (Marriot Autograph) w/ three meal restaurant connected to a 204 unit apartment building, both having swimming pools and amenities atop a five floor parking garage. I worked independently from Schematic/ Site Plan Approval through to 50% Construction Documents using Revit 2019.

Associate,
Project Lead
Arquitectonica, 2020
On Hold



Torre Curridabat

San Jose, Costa Rica

Twin condominium towers with a combined total of 118 units. Tower amenities are located at both the elevated platform of the podium as well as the connection at the roof. I worked through schematic and design development independently.

Associate
Project Lead
Arquitectonica, 2016
On Hold



Alibaba Center

Shanghai, China

Competition win to design four midrise office buildings with retail/office podium positioning departments according to Alibaba group functions. 60,000 sqm within a very limited allowable zoning envelope due to airport proximity and future subway entry/ventilation on site. Responsibilities included management of three employees from Competition through Design Development and Facade Package detailing. I solved local zoning ordinances describing maximum glare and minimum natural office ventilation by placing operable windows behind perforated metal panels to maintain a year-round clean/ high tech image that coincided with Alibaba's business aesthetic.

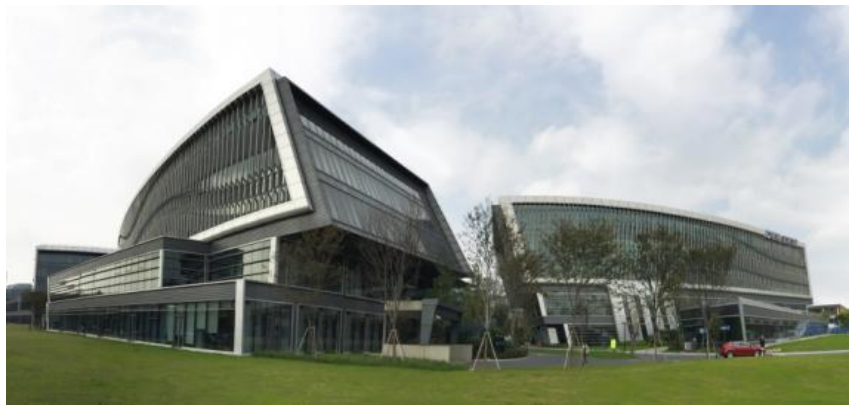
Associate,
Job Captain
Aedas, 2014
Completed 2017



Zhenro Office Park (Street side Buildings)

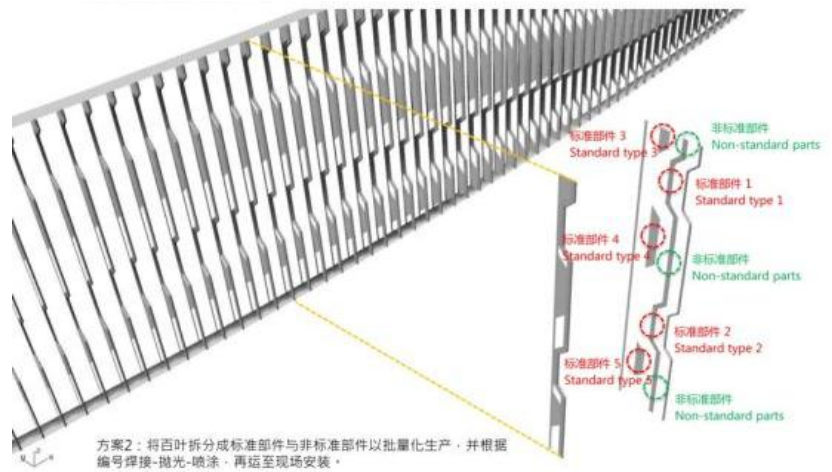
Shanghai, China

Six low rise office buildings located in the Hongqiao Business District of Shanghai. 70,000 sqm of space with a “wave” design metaphor that embodies the surrounding movements of the nearby elevated highway, high speed railroad, and the Hongqiao Airport. Lead a team of three in documenting Schematic and Design Development of the exterior envelope.



Associate,
Job Captain
Aedas, 2014
Completed 2016

Image on the right is taken from the facade presentation I gave to the client group, the local wall manufacturer and building envelope consultants. The client was intrigued by the design of the fins, but wanted to understand cost and constructability issues that may exist. Together with my junior that generated the original design in Rhino, we reinvestigated the waves by simplifying/standardizing the parts required. By mechanically fastening back to a continual vertical member between mullions I eliminated welds altogether. All cutting was designed to occur at straight/regular off-the-shelf plates and pipes. Once finished in Rhino, the digital units were rotated and flattened in CAD and labeled/dimensioned for the manufacturer's use in shop drawings.

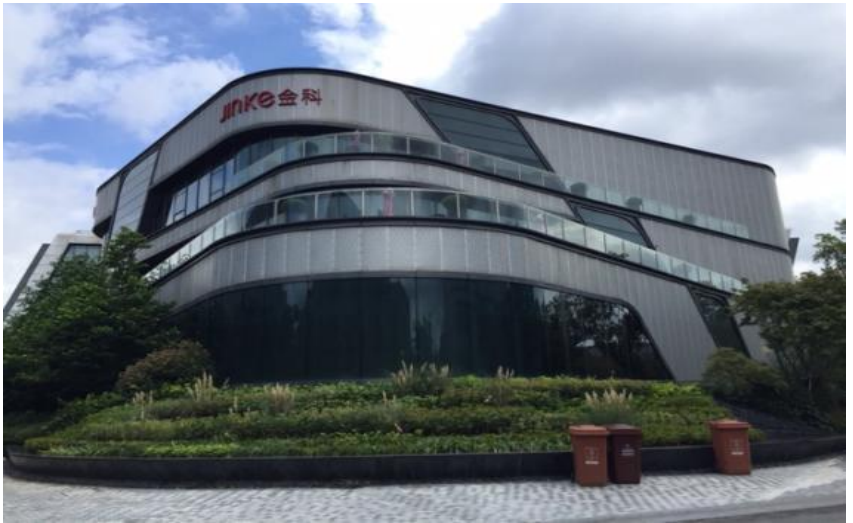


Zhenro Office Park (Courtyard Buildings)

Shanghai, China

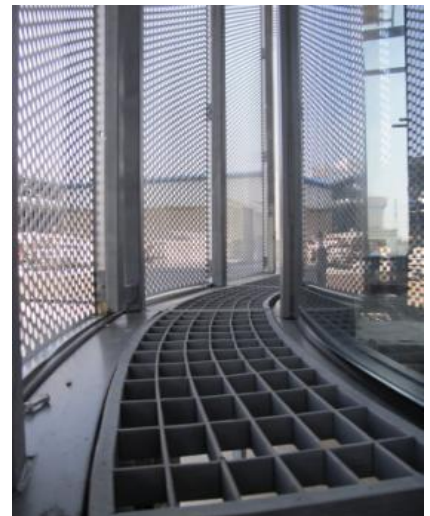
Six low rise office villas within a park-like setting located in the Hongqiao Business District of Shanghai. Three levels each and a combined total of 18,000 sqm, the offices are wrapped in window wall with selected areas having custom perforated metal panels over to create a filtered screening effect. Lead a team of three through Schematic and Design Development of the exterior envelope. Full size mockups were created offsite for the client's final selection of perforation amounts. I designed an access way between the screen system and glazing for maintenance, window opening clearances, and to provide enough distance for the client's desired evening light shows which otherwise would have amounted to light fixtures being attached to the outside walls.

Associate,
Job Captain
Aedas, 2014
Completed 2016



Left: Below the site are two levels of parking. I peeled the site away from all six building at B2 and B1 building entries to allow for both natural daylight to penetrate down as well as eliminate mechanical ventilation of the garage. The buildings "float" with each ground level entry being, essentially, a bridge.

Right: Full scale mockup showing access way between the double skin, curved window wall with selected glass type, several removable perf. panels to receive approval of perf. percentage and curved grating for walkway



PUNTO DIAMANTE

Leon, Mexico

Located near the city of Leon, the competition called for infill between existing buildings. The scheme offers different scales of housing, shopping and commercial space along proposed and/or widened streets. Design proposal also converts the parking lots of an existing shopping mall into garages to make room for two mid rise office towers. Finally, to draw the people of the crowded nearby city, an amusement park was inserted into the hillside.

Associate,
Project Lead
Arquitectonica, 2015
Competition

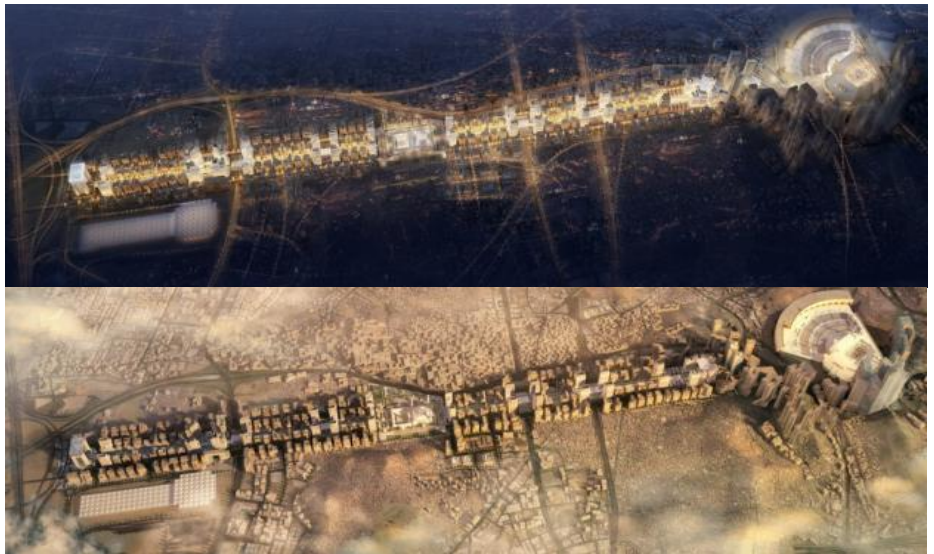


Mecca Phase 3 Master Plan

Mecca, Saudi Arabia

Further refinement to the 7 million sqm master plan including the handling of millions of travelers during the holiday seasons, mosques distributed according to local codes, and allocation of retail, public restrooms, and hotel points along the path to the holy site. I worked with two members of the Dubai office to plot out building footprints and create zoning envelopes within the road and rail infrastructure.

Associate,
Senior Designer
Atkins, 2013
Under construction



Dubai Creek Master Plan

Dubai, UAE

At the terminus of Dubai Creek and adjacent to a bird sanctuary, the competition from local developer EMAAR was to design 10.5 million sqm of mixed use program including various scales of retail and office space, hotels, event spaces, and a variety of residential types, at different price points, organized into communities. The study included an "Olympic Park" for very large gatherings (+10k people) and two mega tall towers, one would later become Calatrava's tower design.

Associate,
Senior Designer
Atkins, 2013
Competition Win



IMX Conference Center

Shanghai, China

The project had three main components. First an office building for the client's new mainland team. Second, temporary office space for their international clients to occupy for between two to six months (almost like a WeWork facility) while they utilized an onsite conference facility and our client's marketing and business development team. Third, the large conference facility to showcase international brands that previously wasn't available in the immediate Hongqiao market.

Associate,
Senior Designer
Atkins, 2012
To be
completed 2020



River Walk Retail Village

Meizhou, China

Retail pedestrian street laminating a three story parking garage (serving the residential towers behind) with, metaphorical "moored shopping boats" connected by second and third floor bridge pathways with event/themed courtyards for seating and people watching in between. Retail street connects a mall on the east to two high end residential towers and a Hakka museum I suggested to the client on the west. As Design Director, I lead a team of four from winning the competition through Schematic Design then later reviewed Design Documents with a production team in Shenzhen.

Design Director
AECOM, 2011
Completed 2015



111 Central Park North

Manhattan, New York

43 unit luxury apartment tower looking out over Central Park with Midtown as backdrop. This spectacular south facing view demanded the use of window wall and glass guardrails. For economy, thermal performance and acoustics, a precast concrete "sleeve" wraps the remaining three facades. As Senior Designer, I spear headed the many 3D massing options for client approvals, including a solution to swing out balconies to line up with the neighboring building, and continued the facade concept through Design Development.

Associate,
Senior Designer
RMJM, 2006
Completed 2008



Gazprom Headquarters

Saint Petersburg, Russia

396 meter tall tower with five base buildings (lifestyle center, museum, library, fitness center) connected by large glass atrium for the Russian gas company, Gazprom. Located between two rivers connected by a bridge thought the site, I lead a team of three to design the large atrium, ground levels of all six buildings, and the parking/support functions below grade with access/security being of prime concern from Schematic through Design Development.

Associate,
Senior Designer
RMJM, 2007
Relocated and completed, 2016



Petro China Headquarters

Karamay, China

New centralized headquarters for the oil company's north eastern district. Program included: research, development, training, regional administration facilities, class rooms, office space, large auditorium, and a publicly accessible museum. Lead a team of three in developing a more elaborate program together with the client and housing that program in three buildings with central courtyards.



Associate,
Senior Designer
Atkins, 2013
On hold



FIU Chapman Graduate School of Business

Miami, Florida

The overall placement of the two buildings in the form of opposing "L" shapes in plan transformed the 97k SF into a courtyard campus environment with exterior walkways and breezeways surrounding water features and planted spaces. Public and admin program are situated along the street front that symbolically opens up at the main lobby, while classrooms and study rooms tuck back, and behind. As Designer, I was responsible for all 3D studies, client presentations, and elevations.



Designer
KPF, 2004
Completed 2008

Waterside Place

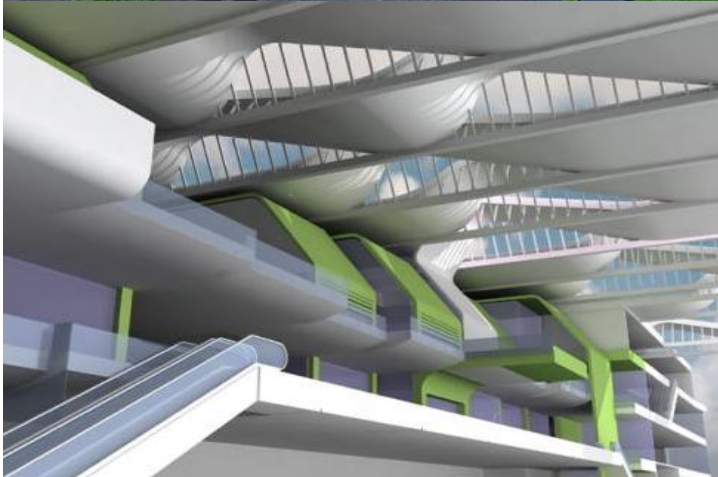
Boston, Massachusetts

Mixed use development in South Boston over highway I-90, "The Big Dig", CSX rail line, a road, an entry ramp, and a Silver Line bus station. I worked with three developer groups and four Boston committees including the Boston Port Authority to design a modern, yet complimentary, project with the Boston Harbor on one side and the convention center on the other. As Senior Designer, I lead a team of five in the creation including a 200 unit residential tower, 300 key hotel (A Loft), and 700k sf shopping mall with a side loaded parking garage. Concept through 50% Design Development.

Associate,
Senior Designer
RMJM, 2007
Cancelled, 2008



Early rendering of rooftop showing relationships of building elements



Early study of sky lights, structural bays and circulation

Rather than approaching this mall with the typical additive language of applying pastel geometries and faux historical references onto the four sides of the large blank eifs box, I divided the long horizontal mass with vertical segments dictated by the column spacing. These segments then became a skin of sorts that "wrapped" over the parapet down over the mall service corridors and then tucked under the adjacent bridge to become the canopy over the service docks underneath and south facing car entry. The east and west elevations then became the "void spaces" of the wrappers with glazed entry lobbies at the two primary entry points to the mall (east facing the convention center and main road) and residential tower (south facing the wharf).

Waterside Place (cont'd)

Boston, Massachusetts

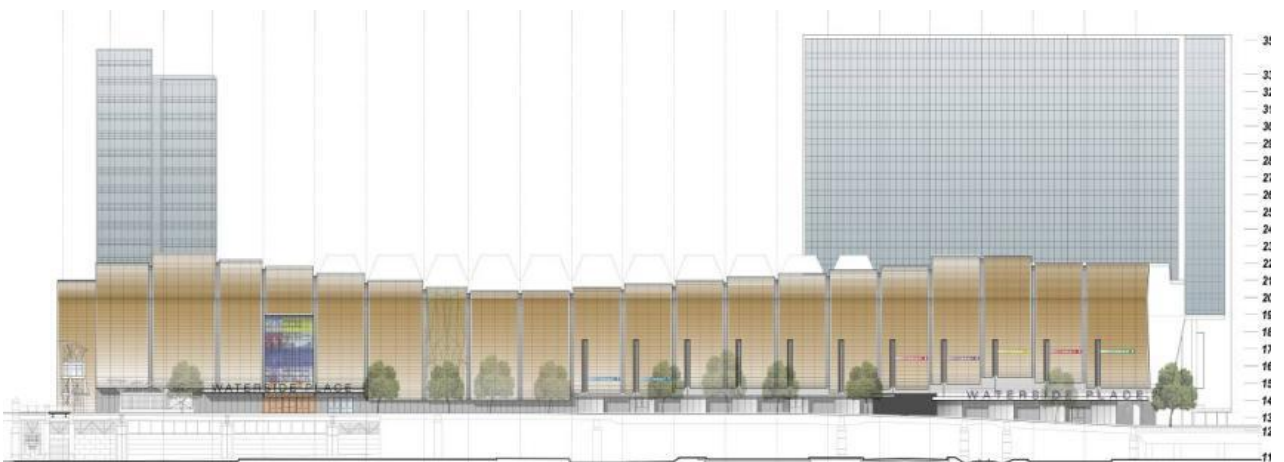
After spending a great deal of time with the mall developer, Vornado, I found that the final floorplans left very little in terms of design to be had, so then I looked upward and decided that the original "wrapper" idea could be lengthened overhead to support a skylight design. I designed the skylight shapes to be in the form of water waves so as to turn the concept into a theming or branding element for what our client named, "Waterside Place." Each "wave" skylight then was staggered at 5, 10, or 15 feet along the structural grid so as to animate the space below.



Associate,
Senior Designer
RMJM, 2007
Cancelled due to
lack of anchors, 2008



Concept + Building Section =
Branding Logo



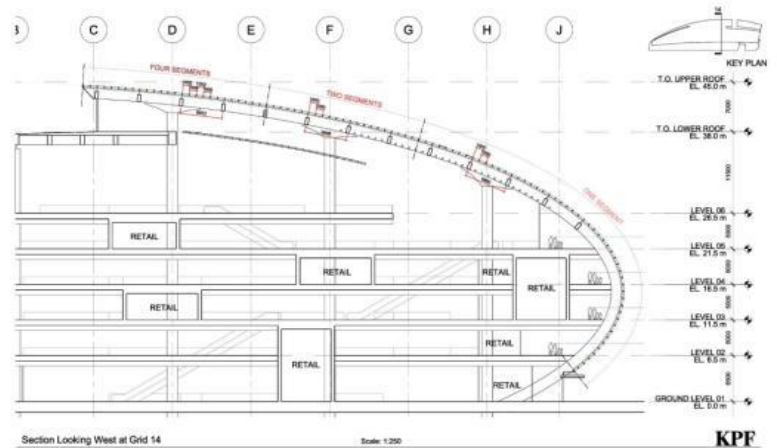
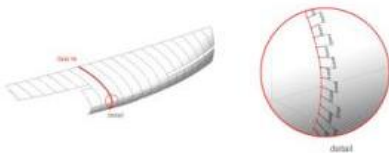
Riverside 66 Shopping Mall

Tianjin, China

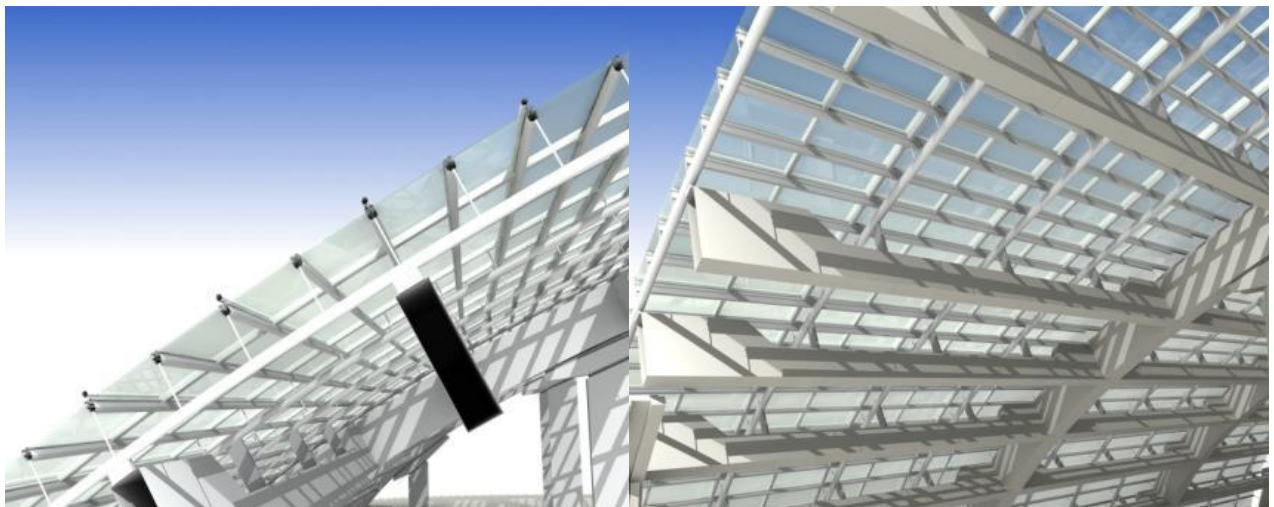
Destination shopping mall acting as “bridge” between a residential community on one side and a new business district on the other. Large food court on the fifth floor serves both shoppers and the neighboring office towers’ lunchtime. Initially I focused on the facade with both the envelope consultant and structural engineer to achieve the smooth glass envelope that is both wall and ceiling facing the river, then focused on the HVAC, sprinkler, and electrical interface points to achieve the visually clean appearance.



Division of shell sections at Grid 14 with 1000 mm segments



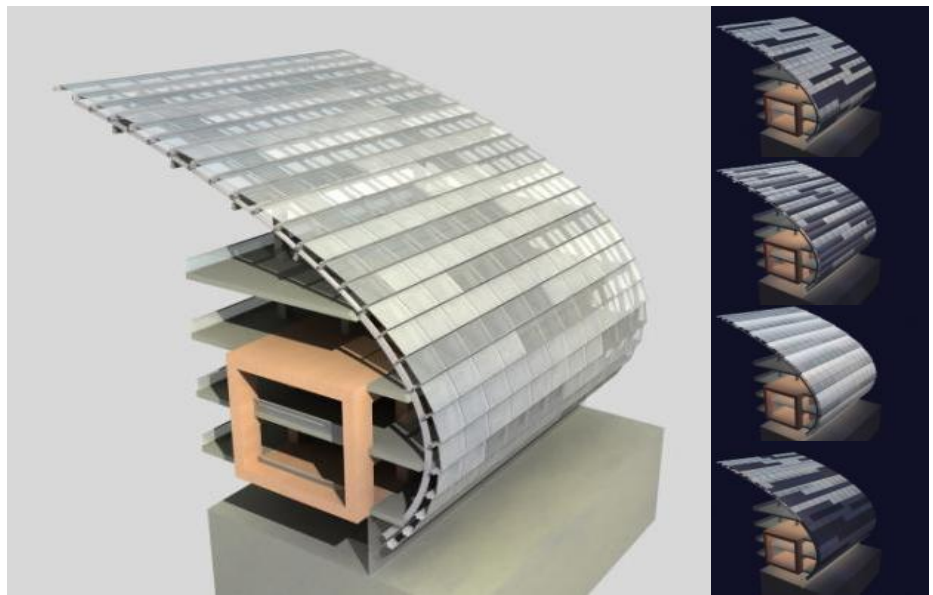
Below left and below right: study models I created for workshops with structural, envelope and hvac consultants. These would then turn into working drawings like the one shown to the right, which I would share with the retail consultant.



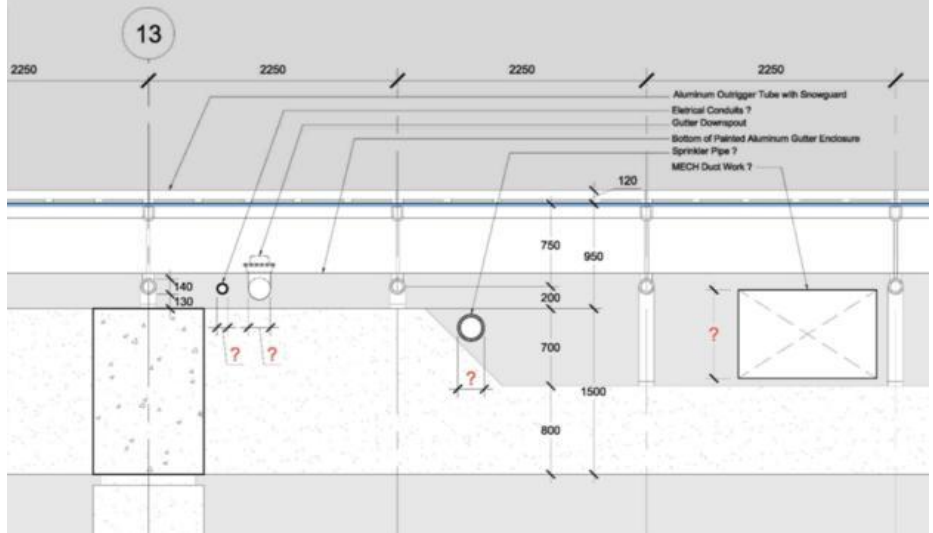
Riverside 66 Shopping Mall (cont'd)

Tianjin, China

Working with our team's Rhino model, I then divided the shell into segments that coincided with the parking grid at B1 and B2. With those initial work points, I then had work sessions with the structural engineer on designing a precast concrete system that could accommodate and conceal the many systems both internal (sprinklers, electric, hvac, stack vents, decorative ceiling screen inserts, lighting) and external (ice guards, window washing, lighting, and gutters).



Designer
KPF, 2005
Completed 2010



Right: Completed Atrium- clutter free glazing.

Far right: Series of studies I did to present the client with options for several retail boxes that over look the atrium at the shopping levels.

CMB Corporate Campus

Chengdu, China

Regional training center and extended stay hotel for operations, online services, and marketing for CMB employees . Phase two included three office buildings and high security information storage center. I worked with a team to win the competition and develop the dining/training center to Design Development.

Associate,
Senior Designer
RMJM, 2008
Completed 2015



Retail Shopping Street

Lang Fang, China

Five retail/restaurant buildings, 8,500 sqm, in close proximity to the new stadium in the city of Lang Fang. I lead a team of two in creating a human scaled environment along one of the city's most congested streets through use of landscaping and "eroding away" at building corners and parapets of terra cotta.

Design Director
AECOM, 2010
Completed 2012



Samsung Seocho Complex

Seoul, South Korea

Three office towers, totaling 239k sqm, for several arms of the Samsung brand; medical, insurance, and construction. The team decided to create a connection between the three towers in both plan and elevation using a “Wooden Building Blocks” metaphor that would tie them together through a shared language and heights/lengths of podium/ tower parapets, cantilevers, and wall types that would be unique to only the three towers. Our team expanded on this metaphor by using that same geometric play that, from a master planning concept gathered the three towers, but in our individual building designs, broke down the massing on all elevations.

I was given the task of studying the curtain wall systems to be applied throughout. We found the best way to illustrate one “block” from another in the towers was to design two distinct curtain wall systems- one that was strongly vertical in expression, and one strongly horizontal. The strength would come, not from the process of adding decoration, but from deeply recessed linear frit glazing where operable windows would be located (and hidden when opened) as per both Seoul’s code for smoke and Samsung’s request for natural ventilation.



Glass overhanging undersides concealing window washing attachment points

Tower C exterior courtyard where the conference space of the second floor cantilevers overhead. Curtain wall folds to become reflective glass ceiling.



Samsung Seocho Complex (cont'd)

To create a more three dimensional design, I began also studying the intersection between the interlocking boxes and the interior/exterior ceilings and walls created at box overhangs and intersections, thereby designing all six "elevations". I set forth to design the exterior and interior ceilings of entry points and lobbies, bottoms of cantilevered faces, and tops of parapets to be a continuation of the horizontal or vertical curtain wall designs. When the walls "folded underneath" to become lobby ceilings, the recessed elements were where I placed air diffusers, recessed lighting and mounting brackets for detectors, security cameras, storefront glazing and glass fin terminating points. Also, at two story atriums that run along the side of Tower C and at lobbies in Tower A and B, I designed the exterior curtain wall to appear as though it extends through, and into, the interior.

Designer
KPF, 2003
Completed 2009



Tower B lobby where curtain wall "punches through" glass fin supported storefront.

Tower C lobby ceiling where curtain wall linear recesses become attachment points for lighting, sprinklers, air vents, and misc security devices .



Left: One of a series of study renderings I created to show horizontal curtain wall entering through Tower C's many atriums, and the visual connection made of the same wall type across the street in Tower B. Stair location was determined best on this side of atrium due to minimum direct sun exposure. Atrium's exterior louver sizes/spacing was also studied simultaneously. Interior curtain wall became a privacy wall separating the office space adjacent from the atrium.



Left: One of Tower C's atriums showing horizontal curtain wall partition

Right: One of Tower C's atriums showing vertical curtain wall partition



